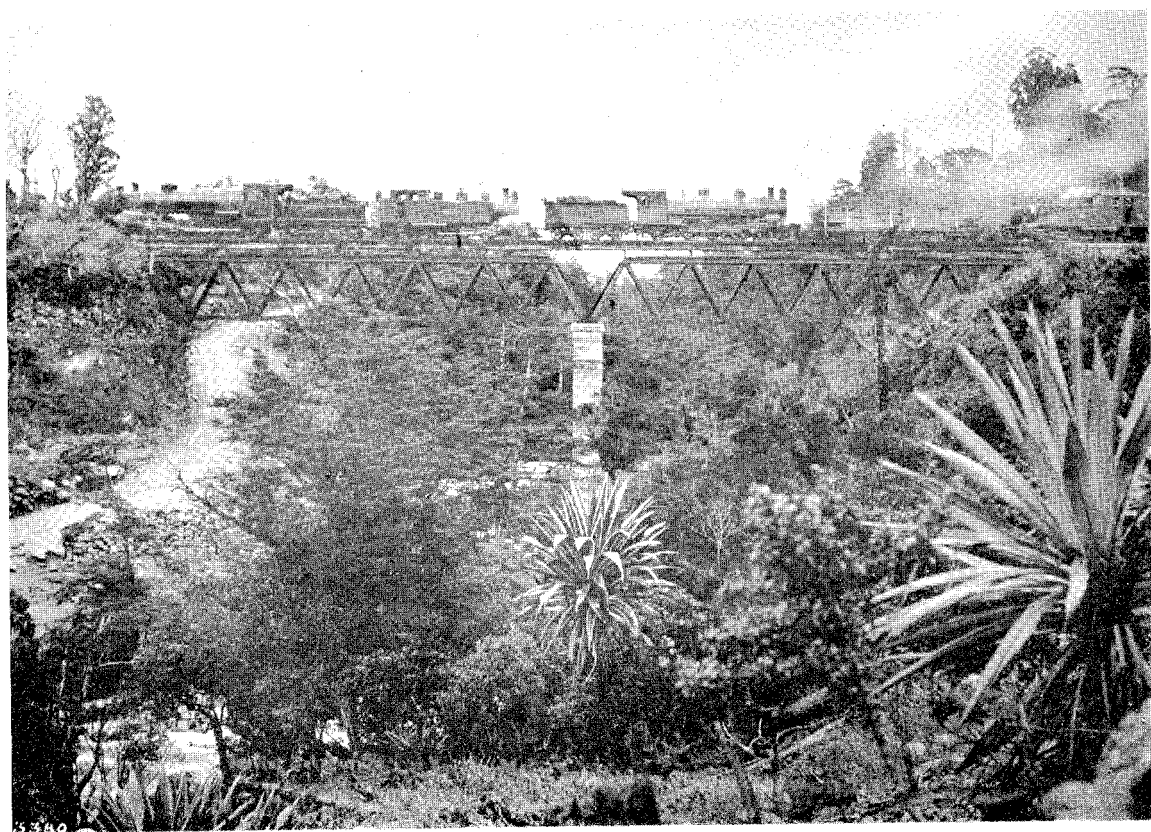


THE MARGIN OF A TAXAD FOREST AT RANGATAUA CRATER-LAKE.  
Ruapehu in background, and midway between Raetihi Hill, a limestone bluff.

[Mr. Lilley, photo.]



FACES FOREST IN GORGE OF THE MANGANUI-A-TE AO.  
*Cordylines indivisa* in foreground.

[Mr. Lilley, photo.]