

SESSION II.
1921.
NEW ZEALAND.

STATE COAL-MINES

(REPORT ON THE WORKING OF) FOR THE YEAR ENDED 31st MARCH, 1921.

Prepared in accordance with the requirements of Section 118 of the Coal-mines Act. 1908.

The GENERAL MANAGER, State Coal-mines, Wellington, to the UNDER-SECRETARY, Mines Department,
Wellington.

SIR,—

20th May, 1921.

I have the honour to submit my annual report on the working of the State coal-mines for the year ended 31st March, 1921.

LIVERPOOL COLLIERY.

The gross total output for the year was 153,722 tons 19 cwt., an increase of 33,310 tons 11 cwt. when compared with the figures of last year. After making allowance for stock in hand (2,851 tons 1 cwt.) at the beginning of the year, and deducting 4,667 tons 19 cwt. for mine consumption and waste, there remained 151,906 tons 1 cwt., which was disposed of as follows:—

| Export— | | | | | Tons. | cwt. | Tons. | cwt. |
|------------------|----|----|----|----|---------|------|---------|------|
| Screened coal | .. | .. | .. | .. | 8,621 | 18 | | |
| Unscreened coal | .. | .. | .. | .. | 114,218 | 14 | | |
| Small coal .. | .. | .. | .. | .. | 2,678 | 10 | | |
| | | | | | | | 125,519 | 2 |
| Local sales— | | | | | | | | |
| Screened coal | .. | .. | .. | .. | 4,031 | 16 | | |
| Unscreened coal | .. | .. | .. | .. | 11,721 | 1 | | |
| Small coal .. | .. | .. | .. | .. | 6,038 | 10 | | |
| | | | | | | | 21,791 | 7 |
| Mine sales— | | | | | | | | |
| Sold to workmen | .. | .. | .. | .. | 2,370 | 11 | | |
| Mine sales .. | .. | .. | .. | .. | 94 | 10 | | |
| Stock in bin | .. | .. | .. | .. | 1,429 | 19 | | |
| | | | | | | | 3,895 | 0 |
| Stock on wharf— | | | | | | | | |
| Unscreened coal | .. | .. | .. | .. | .. | | 700 | 12 |
| Total .. | | | | | .. | | 151,906 | 1 |
| Used on works .. | | | | | 3,365 | 0 | | |
| Waste .. | | | | | 1,302 | 19 | | |
| | | | | | | | 4,667 | 19 |

The gross total output won from this colliery since its inception is 888,157 tons 14 cwt.

Days worked.—The Nos. 1 and 3A mines worked on 251 days, and the No. 3 mine 250 out of a possible 313. The difference between the days worked and the possible working-days is accounted for as follows: (a) Pay Saturdays, 26; (b) union holidays, 18; (c) want of shipping, 2; (d) quarterly cavils, 2; (e) stop-work meetings, 2; (f) strike *re* train service, 8; (g) irritation strike, 4: total time lost for Nos. 1 and 3A mines, 62 days.

In addition to the above, the No. 3 mine was idle on one day owing to a slip on the railway, thus making a total loss of 63 days for this mine, and accounting for the difference in the number of working-days.

The average number of persons employed in and about the mine in connection with coal-winning was 325 (an increase of 49 as compared with the previous year), made up as follows: Underground—Coal-hewers, 114; deputies, shiftmen, and truckers, 126; on the surface—57 men and 28 boys.

In addition to those employed under the head of "coal-winning" there were 17 men and 1 boy employed on property and development work, making a total number for this colliery of 314 men and 29 boys.

The total payments made in connection with coal-winning on account of wages, stores, mine-timber, and compensation amounted to £96,890 15s. 5d., an increase of £33,210 0s. 5d. in payments made when compared with the previous year.

The coal-hewer's average daily gross earning was 28s. 2·78d., and the net return to each man was 25s. 11·45d., a net increase of 6s. 9·28d. per day per man over last year.

Underground Development.—With the exception of the Morgan seam, where fifteen pairs of miners are employed in solid workings, the bulk of the output was obtained from pillar-extraction in the Nos. 1-3 and 3A mines.

In the Morgan seam operations are now confined to developing the area north and west of the haulage-road, all workings on the eastern side being stopped owing to the seam pinching and the intrusion of stone bands. Reference to the plan accompanying this report shows that the western levels have been driven several chains in advance of where the upper seam stopped in the direction of Tararu Creek, and whilst admitting that the coal from this area is much harder of late, it is regrettable to report that the seam in the main west level is showing signs of pinching, it being only 7 ft. 6 in. thick, inclusive of two bands of stone of a total thickness of 6 in. The seam in the main headings driven in a northerly direction maintain an average thickness of 8 ft.

Work in the upper seam overlying the Morgan seam is confined to pillar-extraction, and in places where the overlying strata is thin some of the pillars are merely split and robbed, the small pillars being left to protect the surface, and thus prevent water entering the mine from the small creeks.

In the No. 3 mine twenty-one pairs of miners are employed extracting pillars on the eastern side of the haulage-road. All pillars on the western side, with the exception of those left to protect the haulage-road, have been extracted. A reasonable output may be expected from this mine for the next six months, and afterwards a gradual decline.

In the No. 3A mine three pairs of miners are employed extracting pillars. This mine is nearing exhaustion, and in the course of four or five months continuous working operations may cease altogether.

Development Work.—Under this head practically nothing of importance has been done. The low-level haulage-tunnel, which was in course of construction to intersect the Morgan seam at its lowest point, was stopped at the beginning of the year. At the present face of the drive, which is 21 chains distance from the tunnel-entrance, a coal-seam was struck, from which inflammable gas was freely given off. In order to relieve this gas, and with a view of ventilating the tunnel more efficiently, the coal-seam was driven on in a westerly course for a distance of 3 chains, and a borehole 4 in. in diameter has been drilled from the surface at a gradient of 1 in 1½ connecting with the seam at this point. From this latter point a rise will be constructed to the surface, and the borehole will serve the purpose of ventilating, also indicate the direction and gradient of the rise.

Since the borehole herein referred to was drilled, nothing further has been done pending the arrival of suitable permitted explosives for stonework. In this connection I may state that an order was placed several months ago for the permitted explosive Samsonite No. 2, but the makers now state they are unable to supply owing to their inability to procure the necessary ingredients for the manufacturing of this explosive. In view, however, of the near exhaustion of the Nos. 3 and 3A mines it is imperative that this tunnel be constructed without delay, therefore an attempt will be made to complete the construction of this tunnel with the ordinary permitted explosives similar to that now used for blasting in coal.

Cable Tram.—During the year a cable tram was installed for the conveying of workmen from near Rewanui Railway-station to what is known as the middle brake. This necessitated (a) the laying of a 3-ft.-gauge tramway, 25 chains in length, up a grade of 1 in 4; (b) the erection of a haulage-engine coupled with a pair of winding-drums, and the housing of same; (c) the building of two cars for the carriage of workmen. The tramway from the lower end to a point near midway is laid on the three-rail principle, and from there on to the upper terminus with a double road. Between each road is also laid a centre-rail.

The cars, each of which are capable of seating thirty-eight passengers, are fitted with nineteen seats on each side. The seats are so arranged that the passengers sit in a horizontal position when being either raised or lowered on the incline. Each car is also fitted with a safety appliance which automatically comes into operation by gripping the centre-rail once the tension of the rope is released. The safety appliance has been tested on several occasions on both a loaded and empty car by releasing the rope, and it is pleasing to report that on all occasions it never failed to act.

Bowling-green, Tennis-court, and Recreation-ground.—With a view of making the conditions of the employees of the State collieries more congenial, a large sum of money has been expended in improving the recreation-ground, the laying-down of a tennis-court, and a sum of money has also been voted for making a bowling-green. The tennis-court, which is laid down in tarred asphalt and properly fenced with wire netting, is, I am pleased to report, much appreciated and patronized by the residents of Runanga. The work of laying down a full-sized bowling-green adjoining the tennis-court is now taken in hand, and it is expected the same will be ready for use by next summer.

JAMES MINE.

The principal operations carried out at the mine during the year were as follows: (a) Dismantling, carting, and re-erecting a portion of the coal-storage bins from the Point Elizabeth Colliery; (b) construction of the main haulage-road tunnel to connect with the seam, also an upcast for ventilation purposes; (c) the installation of the endless-rope-haulage engine, and the housing of same; (d) the power-house extended and a Bellis-Morcomb engine and generator installed therein.

In my last annual report reference was made as to the scheme outlined in connection with the erection of only a portion of the coal-storage bins. The portion erected is 50 ft. by 50 ft., and is capable of holding approximately 600 tons of coal. Although the portion may seem small, it is sufficiently large to deal with the output until such time as the major portion is erected. The erecting of the coal tipping and screening plant, together with the engine for driving the same, is being proceeded with. A gangway leading from the storage-bins on to the haulage-road has been erected. The haulage-road tunnel, together with an upcast for ventilating purposes, has been constructed, the former connecting with the seam at a point 16 chains from the mine-entrance.

The seam when struck in the tunnel was only 3 ft. in thickness. This, of course, was expected, for boring had already proved the seam to be thin at this point, and it will be therefore necessary to continue driving the main heading, together with a parallel heading, for a further distance of approximately 8 chains, in part stone and part coal, before the seam of a workable thickness is reached.

In connection with the construction of the upcast herein referred to, it was necessary in the first place to drive a level crosscut from the main haulage-tunnel, a distance of 1 chain. From this latter point the upcast was driven at a gradient of 1 in 1 to connect with the surface.

This work now being completed, arrangements have been made to install a single-inlet sirocco fan, 60 in. in diameter, for the ventilating of the whole of the mine. This fan, which will be erected in close proximity to where the upcast connected on the surface, will be electrically driven, power being supplied from the generating plant referred to in (d).

The endless-rope-haulage engine has been installed and properly housed near the storage-bins. The hauling-ropes together with other mining ropes for this colliery have arrived.

Railway.—Good progress has been made with the construction of the branch railway from Runanga to the mine, and under favourable conditions the Public Works Department expect to have a temporary line laid through in about six months from date, on which coal may be hauled. The development of this mine has to a large extent been governed by the construction of this railway, and by the time it is completed the management expect to be in a position to produce coal, the output of which will increase as the mine develops.

Employees, Expenditure, &c.—During the year there were on an average thirty-one men employed at this colliery. The total expenditure incurred to the 31st March last in connection with the opening-up of this colliery is £11,056 14s. 1d.

Accidents.—A few minor accidents have occurred during the year, and it is pleasing to report there were none of a serious nature.

General Office and Workshops.—At the present time the general office, together with the workshops, are situated at Dunollie. This place was, of course, central for both the Liverpool and the Point Elizabeth Collieries. Now that the latter is closed down, and having in view that the James Colliery will be connected with a branch railway from near Runanga Station, the question of building a new general office near the junction of the railways at Runanga will have to be considered, as this place will be central for both the Liverpool and James Colliery. It will also be advisable to erect a new workshop at the James Colliery, and transfer to there all the plant and machinery from the Point Elizabeth Colliery workshop. This place is preferable to Liverpool Colliery, as there is more level ground available.

MACDONALD MINE.

In connection with the development of this mine it must be pointed out that operations are not in any way being rigorously proceeded with. If they were the mine would be in a producing-stage long before the railway from Huntly to Waikokowai was constructed. It is therefore the management's aim not to employ a large number of men at the initial stage, but to proceed with development work in such a manner, with a limited number of employees, that the mine and railway will be ready practically at the same time.

The work so far carried out in connection with the development of this mine is as follows: (a) Construction of a road, two miles in length, from Rotowaro Station to Waikokowai; (b) building of four workmen's huts, workshop and store-room, office, engine-house, magazine for explosives, also the repairing of two cottages on the property; (c) clearing the site for the mine-entrance, also a commencement made to construct the main haulage-road tunnel; (d) drilling three holes on the line of the main haulage-road, also one on the village settlement reserve; (e) fencing and clearing 30 acres of land for tree-planting.

Rotowaro-Waikokowai Road.—Prior to the construction of this road all material required for the developing of this mine had to be carted from Huntly, a distance of 10½ miles, and owing to the grades of the road being steep in places the loads carried were small and the trips limited to one per day. Since this new road has been constructed the carting-cost has been considerably reduced. The carters are now able to make two trips per day, also to bring much heavier loads. The road, I am pleased to say, is a great benefit to the mine, and is also much appreciated by the settlers in that locality.

Main Haulage-road.—To connect with the seam from the mine-entrance necessitates the construction of a stone drive approximately 6 chains in length. This drive has been commenced and driven a distance of 2 chains. The size of the drive is 10 ft. 6 in. wide and 7 ft. high, and properly

timbered with 12 in. by 10 in. and 10 in. by 10 in. bars and 10 in. by 8 in. legs. At the present time only one shift of three men is employed in the drive.

Boring.—During the year three holes were drilled on the line of the main haulage-road and one on the village-settlement reserve. The three former were necessary in order to determine the gradient of the haulage-road, and the latter to ascertain whether coal of a workable thickness existed on the village reserve before building thereon. This latter hole was drilled to a depth of 315 ft., but owing to the strata passed through being very broken, and the bottom of the hole being 150 ft. lower than the screening-plant site, together with no coal-seam being located, it was abandoned.

Tree-planting.—On the property acquired for the opening-up of this mine (1,289 acres) there are small areas which are useless for mining, and therefore, in order to utilize these portions of the property arrangements have been made to plant trees for mining purposes. So far 25 acres have been cleared and fenced, and, with the assistance of the Forestry Department, arrangements have been made to plant this area with *Eucalyptus saligna* and *Pinus radiata* trees. It is also arranged to go in for growing black-wattle. In the Waikato district there is a scarcity of mining-timber, and although the mine requirements will in all probability be small during the opening-out stages, there is no doubt that a large quantity will be required when pillar-extraction commences. By the latter time the trees now being planted will have grown large enough to enable mining-timber to be supplied from the State Coal-mines Department's property. This will mean a great saving in the cost of mining-timber, and at the same time ground is being used which would otherwise be non-productive.

Clay for Building Purposes.—During the year several samples of clay from off the property have been tested at the Dominion Laboratory in order to ascertain whether it would be suitable for brickmaking. The samples so far tested are reasonably satisfactory, but have failed to reach the standard required of a good clay for brickmaking. The chief trouble with the clay so far tested is excessive shrinkage, and the liability of the bricks to crack considerably when heated to a certain temperature. With a view to carrying out further tests, other samples will be forwarded, together with a sample of sand from that locality.

GENERAL.

Reviewing the work for the year, it will be seen there is a substantial increase in output as compared with the previous year. In April, 1920, it was estimated that an output of 160,000 tons would be obtained for the year ended 31st March last, but the yield fell short by over 6,000 tons. This deficiency in output, as compared with the estimate, is accounted for by the fourteen days lost through strikes, stop-work meetings, &c., previously referred to. The average daily output for the year works out to 614 tons, and from these figures it will be seen that had it not been for the fourteen-days strike the output would no doubt have been greater to the extent of about 8,000 tons, and the estimated output exceeded by 2,000 tons.

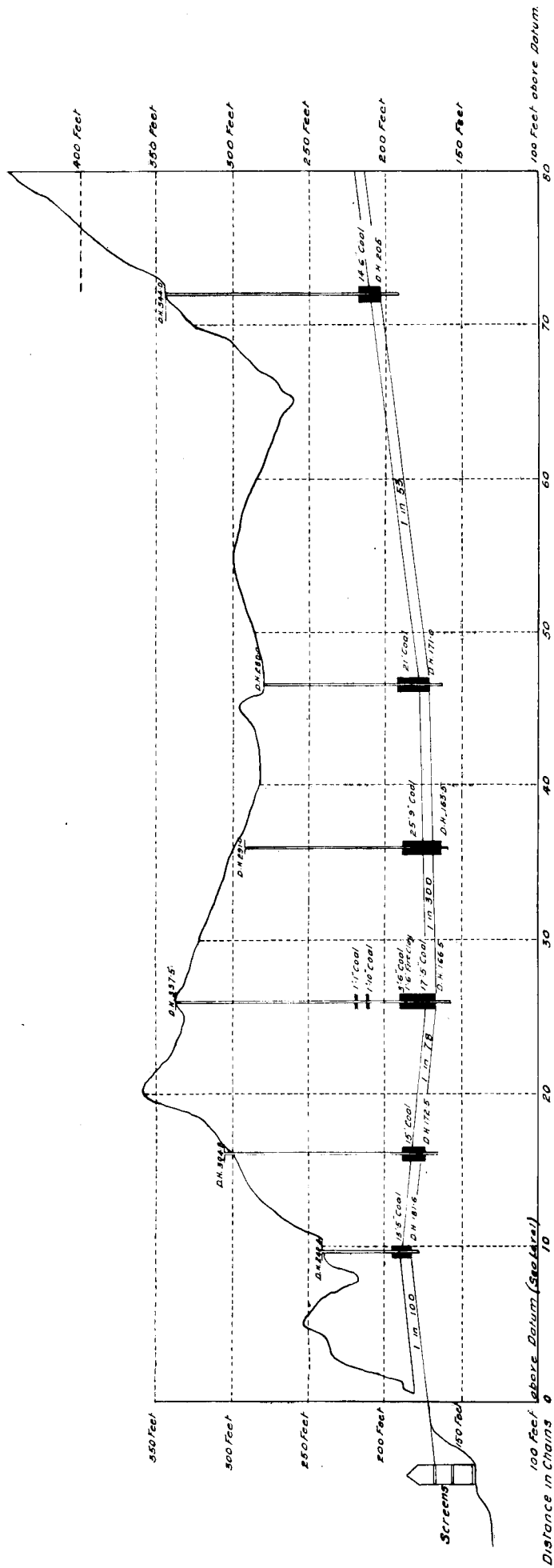
In conclusion, I wish to say that all the officers have performed the duties delegated to them in a most satisfactory manner, and the Consulting Engineer, also the Director of Geological Survey, have rendered valuable assistance in the various developments connected with the mines.

I have, &c.,

I. A. JAMES,

General Manager.

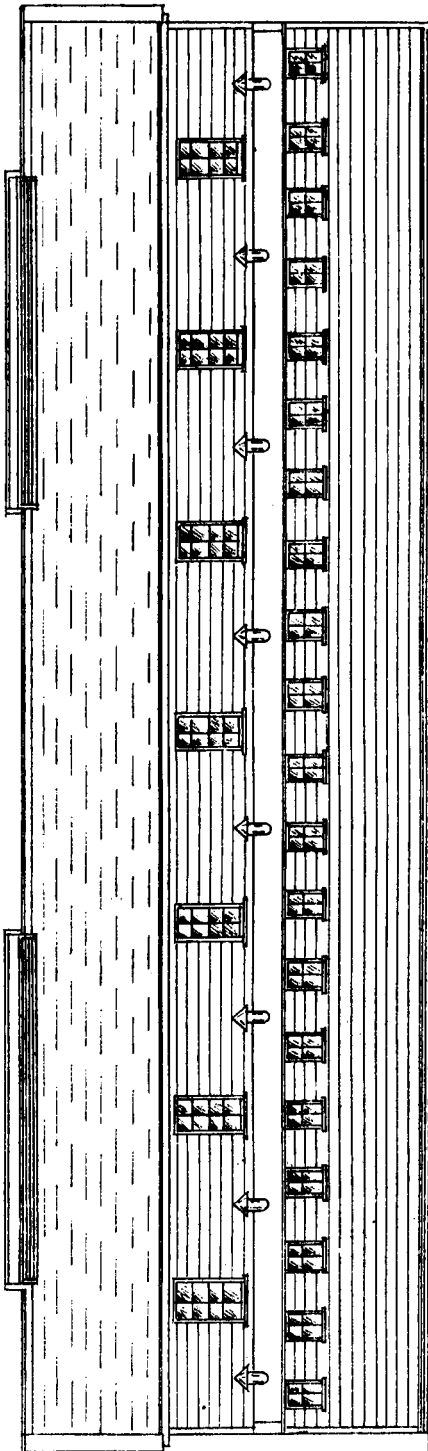
The Under-Secretary, Mines Department, Wellington.



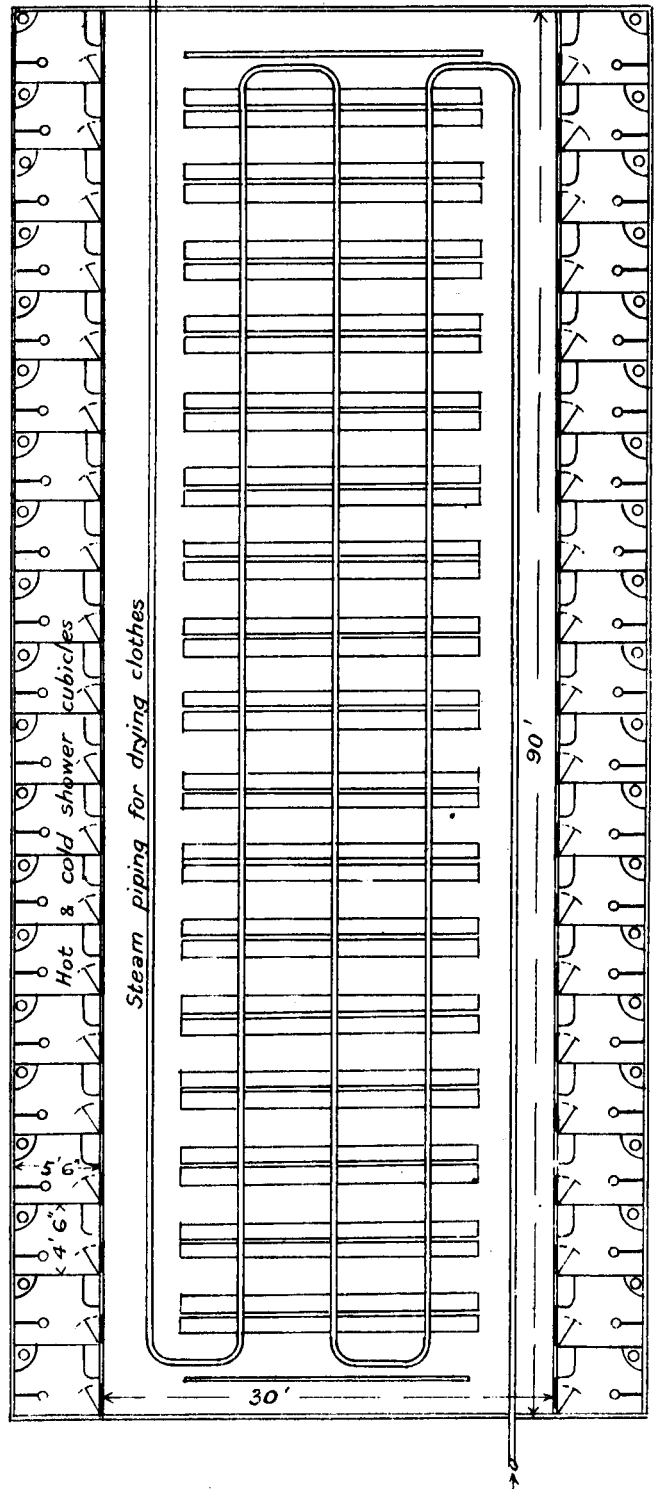
LONGITUDINAL SECTION.—FIRST MILE OF HAULAGE ROAD, MACDONALD MINE.

Proposed
Change and Bath-house
at the
MACDONALD MINE

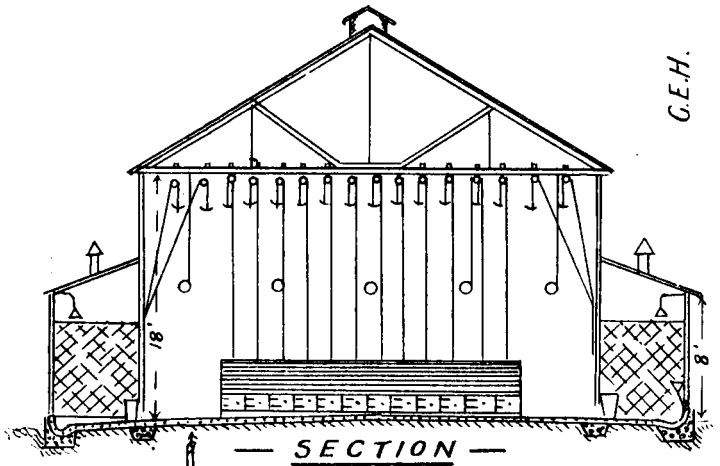
Scale of Feet
10 5 0 10 20
(signed) Geo. Millar.



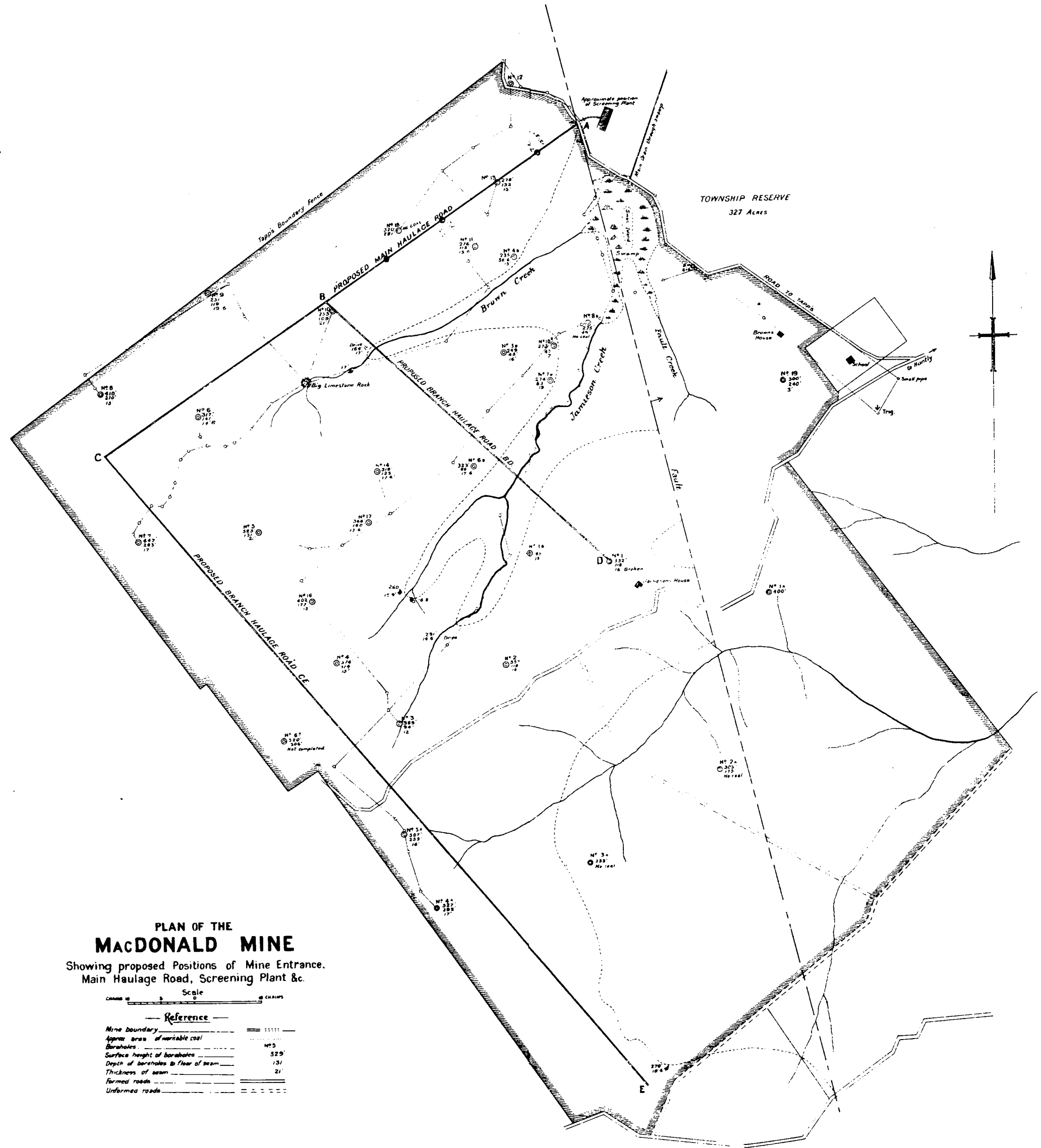
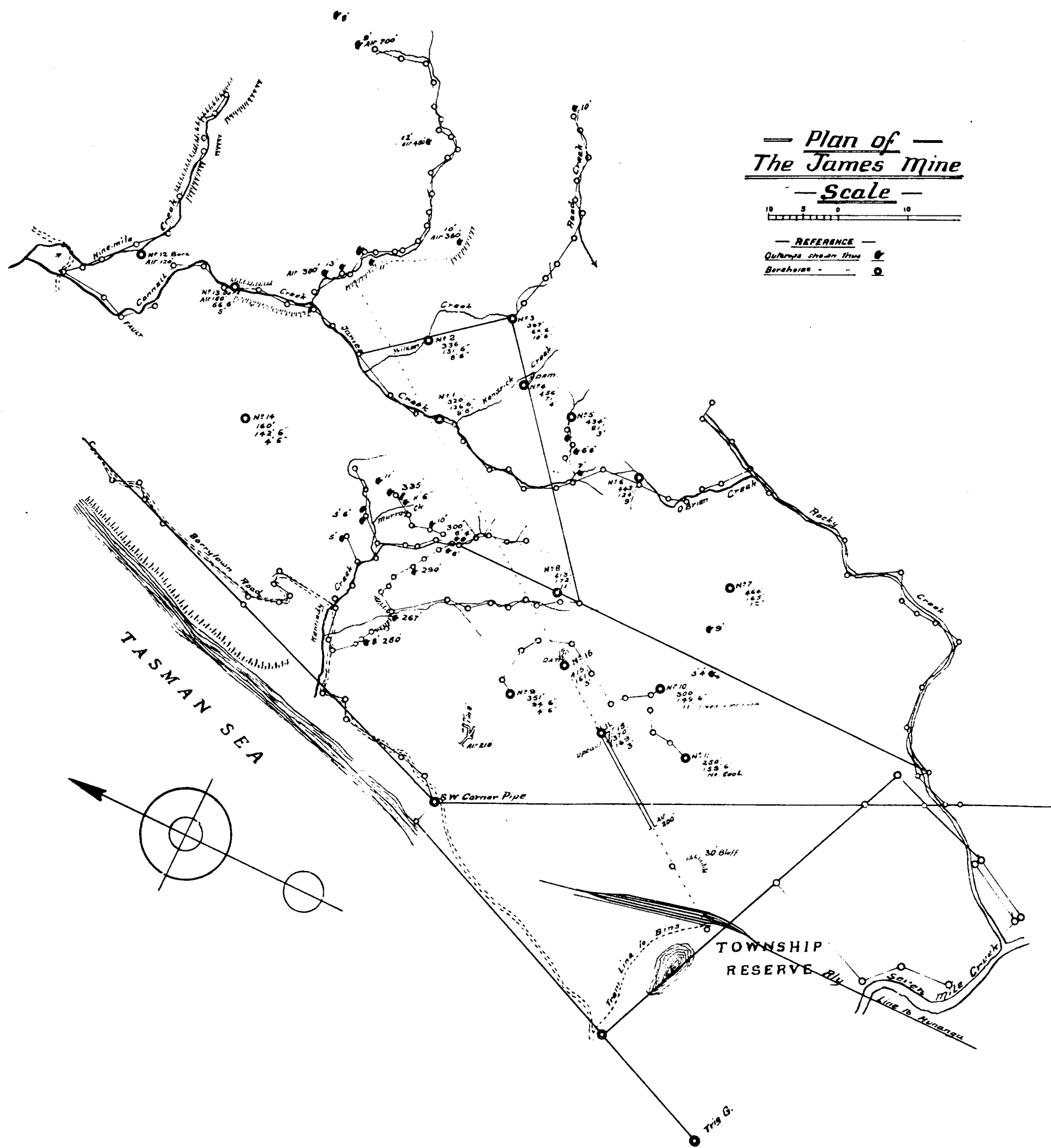
— SIDE ELEVATION —

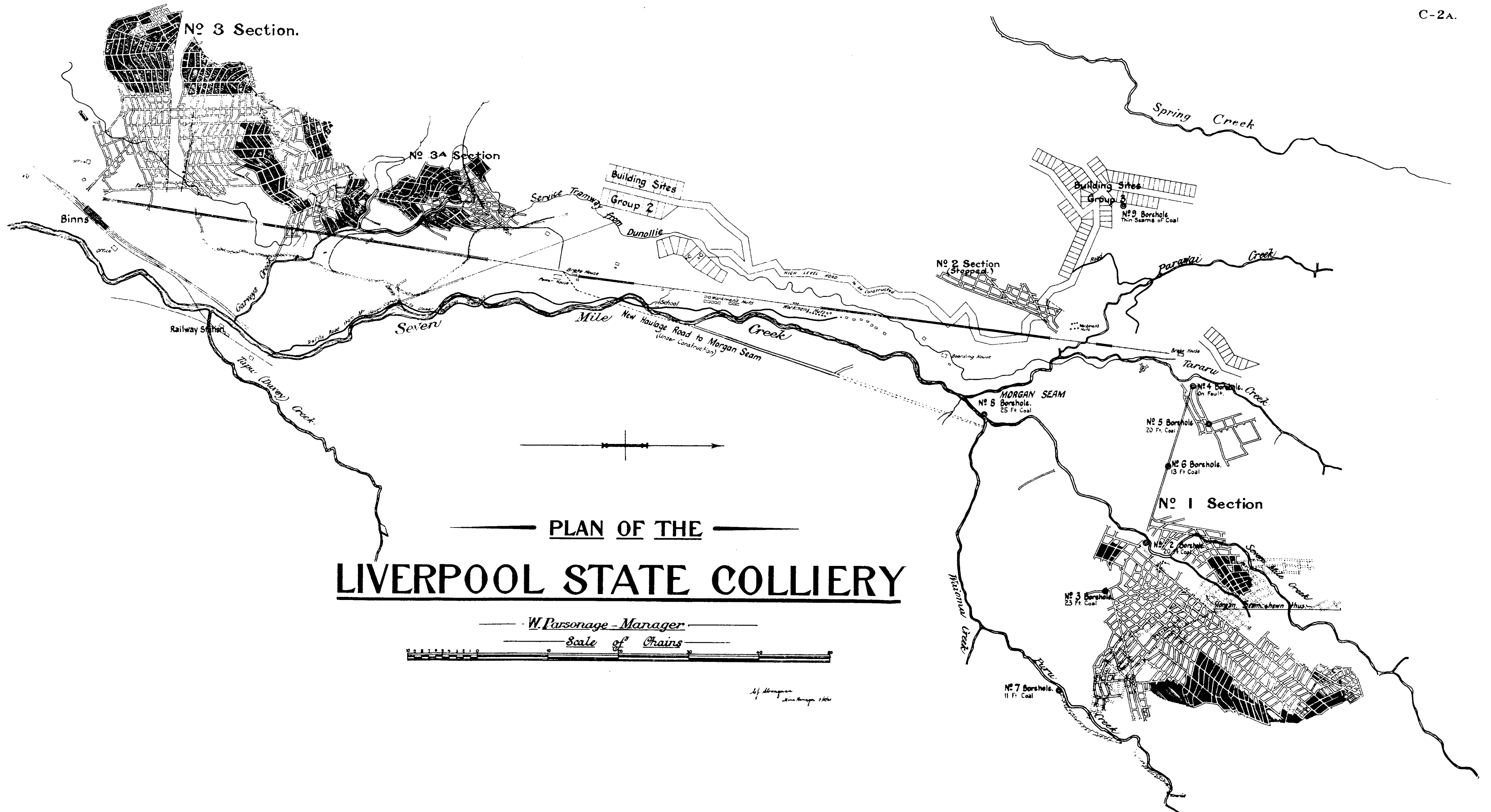


— PLAN —



C.E.H.





STATEMENT OF THE RECEIPTS AND EXPENDITURE OF THE NEW ZEALAND STATE COAL-MINES FOR THE YEAR ENDED 31st MARCH, 1921.

| Receipts. | | | Expenditure. | | |
|---|---------|-------|--|----------|-------|
| To Cash in hand and in Public Account at 31st March, 1920 | £ | s. d. | By Point Elizabeth Colliery Account | £ | s. d. |
| Proceeds of sale of coal | 273,163 | 1 2 | Property and development | 3,535 | 7 4 |
| Recoveries | 17,298 | 16 5 | Machinery, plant, and rolling-stock | 1,988 | 6 9 |
| Refunds, &c. | 38 | 0 5 | Buildings | 583 | 16 2 |
| Interest on Investment Account | 1,439 | 15 9 | Cottages | 11 | 8 0 |
| Refund of investment | .. | .. | Stores and materials | 21,039 | 13 11 |
| | | | Wages | 85,885 | 1 8 |
| | | | Timber | 159 | 0 5 |
| | | | Special rate | 1,243 | 2 6 |
| | | | Railway tickets | 914 | 2 3 |
| | | | | 115,369 | 19 0 |
| | | | James Colliery— | | |
| | | | Property and development | 9,198 | 4 8 |
| | | | Machinery, plant, and rolling-stock | 2,569 | 0 5 |
| | | | | 11,767 | 5 1 |
| | | | MacDonald Colliery— | | |
| | | | Property and development | 1,993 | 1 11 |
| | | | Machinery, plant, and rolling-stock | 1,238 | 2 3 |
| | | | Buildings | 325 | 12 5 |
| | | | Cottages | 1,729 | 12 3 |
| | | | Tree-planting | 31 | 4 6 |
| | | | | 5,317 | 13 4 |
| | | | Seddonville Account | 314 | 3 3 |
| | | | Wellington Depot Account | 48,233 | 18 4 |
| | | | Christchurch Depot Account | 18,191 | 2 2 |
| | | | Wanganui Depot Account | 6,703 | 10 10 |
| | | | Dunedin Depot Account | 246 | 6 8 |
| | | | | 73,689 | 1 3 |
| | | | Management and office salaries | 4,812 | 5 3 |
| | | | Rents | 92 | 14 2 |
| | | | Interest | 9,101 | 19 2 |
| | | | Travelling-expenses | 350 | 7 2 |
| | | | Printing and stationery | 129 | 16 9 |
| | | | Repairs and maintenance | 2,046 | 5 1 |
| | | | Railway haulage | 18,782 | 18 7 |
| | | | Marine freights | 58,202 | 19 9 |
| | | | Terminal charges | 2,655 | 19 4 |
| | | | Cargo adjustments | 11 | 6 4 |
| | | | Postages and telegrams | 149 | 15 10 |
| | | | Insurances | 964 | 1 0 |
| | | | Compensation | 1,690 | 12 5 |
| | | | General expenses | 650 | 6 7 |
| | | | Audit fees | 35 | 0 0 |
| | | | Refund of revenue, &c. | 34 | 3 11 |
| | | | | 99,710 | 11 4 |
| | | | | 18,292 | 16 4 |
| | | | | £324,939 | 18 5 |
| | | | Cash in hand and in Public Account at 31st March, 1921 | .. | .. |
| | | | | £324,939 | 18 5 |

State Coal-mines Office, Wellington. 24th June, 1921.
Louis H. ELLERS, F.R.A., N.Z., Accountant.

G. JAS. ANDERSON,
Minister of Mines.

BALANCE-SHEET OF THE NEW ZEALAND STATE COAL-MINES.
Statement of Liabilities and Assets at 31st March, 1921.

| Liabilities. | | | Assets. | | |
|---------------------------------------|---------|------|---|--------|--------------|
| £ | s. | d. | £ | s. | d. |
| Debenture loan .. | 175,000 | 0 0 | Point Elizabeth Colliery,— | | |
| Loan under Appropriation Act, 1912 .. | 50,000 | 0 0 | Machinery, plant, ropes, and rolling-stock— | | |
| Inscribed stock .. | 2,601 | 0 7 | Cost at 31st March, 1920 .. | 1,386 | 18 6 |
| | | | Transferred to Liverpool Colliery .. | 1,386 | 18 6 |
| Debenture sinking fund .. | 20,028 | 0 0 | | | |
| Depreciation fund.. | 5,884 | 11 2 | Point Elizabeth (Liverpool) Colliery and Development Property Account,— | | |
| | | | Cost at 31st March, 1920 .. | 89,844 | 5 8 |
| Accrued interest .. | 4,550 | 19 7 | Additions during the year .. | 3,638 | 8 7 |
| Sundry creditors .. | 22,286 | 3 10 | | | |
| | | | Depreciation .. | 93,482 | 14 3 |
| Bad-debts reserve.. | | | | 9,318 | 5 5 |
| | | | | | 84,164 8 10 |
| Contracts Deposit Account .. | | | Machinery, plant, ropes, and rolling-stock— | | |
| Stocks suspense .. | | | Cost at 31st March, 1920 .. | 41,518 | 15 0 |
| | | | Additions during the year .. | 3,222 | 1 6 |
| General Profit and Loss Account— | | | | | |
| Balance at 31st March, 1920 .. | 38,670 | 9 10 | Depreciation .. | 44,740 | 16 6 |
| Net profit for year .. | 6,912 | 1 8 | | 4,474 | 1 8 |
| | | | | | 40,266 14 10 |
| | | | Buildings at mine— | | |
| | | | Cost at 31st March, 1920 .. | 3,983 | 13 3 |
| | | | Additions during the year .. | 1,285 | 18 0 |
| | | | | | |
| | | | Depreciation .. | 5,279 | 11 3 |
| | | | | 527 | 19 2 |
| | | | | | 4,751 12 1 |
| | | | Cottages at mine— | | |
| | | | Cost at 31st March, 1920 .. | 4,740 | 16 10 |
| | | | Additions .. | 1,903 | 10 0 |
| | | | | | |
| | | | Depreciation .. | 6,644 | 6 10 |
| | | | | 664 | 8 8 |
| | | | | | 5,979 18 2 |
| | | | Coal (stock on hand at mine and wharf) | | |
| | | | Coal (stock on hand afloat) .. | 2,403 | 14 0 |
| | | | | 3,333 | 6 8 |
| | | | | | |
| | | | Stores (stock on hand) .. | 5,737 | 0 8 |
| | | | | 13,003 | 18 10 |
| | | | | | 153,903 13 5 |
| | | | James Colliery and Development Property Account,— | | |
| | | | Cost at 31st March, 1920 .. | 4,736 | 11 9 |
| | | | Additions during the year .. | 10,763 | 11 4 |
| | | | | | |
| | | | Machinery, plant, ropes, and rolling-stock— | | |
| | | | Cost at 31st March, 1920 .. | 375 | 7 9 |
| | | | Additions during year .. | 4,568 | 6 2 |
| | | | | | |
| | | | MacDonald Colliery and Development Property Account,— | | |
| | | | Cost at 31st March, 1920 .. | 54,733 | 10 2 |
| | | | Additions during year .. | 3,805 | 19 3 |
| | | | | | |
| | | | Machinery, plant, and rolling-stock | | |
| | | | Cost at 31st March, 1920 .. | 234 | 1 4, |
| | | | Additions during the year .. | 1,475 | 6 5 |
| | | | | | 1,709 7 9 |

BALANCE-SHEET OF THE NEW ZEALAND STATE COAL-MINES—continued.
Statement of Liabilities and Assets at 31st March, 1921—continued.

Liabilities—continued.

| £ | s. | d. | £ | s. | d. | £ | s. | d. | £ | s. | d. |
|--|----|----|----|----|----|------------|----|----|--------------|----|----|
| Assets—continued. | | | | | | | | | | | |
| MacDonald Colliery and Development Property Account—continued. | | | | | | | | | | | |
| Buildings at mines— | | | | | | | | | | | |
| Expended during the year .. | | | .. | | | .. | | | 394 19 1 | | |
| Cottages at mine— | | | | | | | | | | | |
| Expended during the year .. | | | .. | | | .. | | | 1,808 8 3 | | |
| Tree-planting— | | | | | | | | | | | |
| Expended during the year .. | | | .. | | | .. | | | 53 15 5 | | |
| Wellington Depot Property Account— | | | | | | | | | | | |
| Cost at 31st March, 1920 .. | | | .. | | | 2,271 17 6 | | | | | |
| Additions during the year .. | | | .. | | | 388 3 1 | | | | | |
| Depreciation .. | | | .. | | | 2,660 0 7 | | | | | |
| | | | | | | 266 0 0 | | | | | |
| Stocks on hand | | | .. | | | .. | | | 2,394 0 7 | | |
| Stocks Suspense Account | | | .. | | | .. | | | 1,510 10 9 | | |
| | | | | | | .. | | | 715 17 0 | | |
| Christchurch Depot Property Account— | | | | | | | | | | | |
| Cost at 31st March, 1920 .. | | | .. | | | 3,290 6 8 | | | | | |
| Additions during the year .. | | | .. | | | 317 3 1 | | | | | |
| Depreciation .. | | | .. | | | 3,607 9 9 | | | | | |
| | | | | | | 360 15 0 | | | | | |
| Stocks on hand | | | .. | | | .. | | | 3,246 14 9 | | |
| Stocks Suspense Account | | | .. | | | .. | | | 1,324 16 7 | | |
| | | | | | | .. | | | 94 3 0 | | |
| Wanganui Depot Property Account— | | | | | | | | | | | |
| Cost at 31st March, 1920 .. | | | .. | | | 1,594 3 11 | | | | | |
| Less sale .. | | | .. | | | 45 0 0 | | | | | |
| Depreciation .. | | | .. | | | 1,549 3 11 | | | | | |
| | | | | | | 159 8 5 | | | 1,389 15 6 | | |
| Stocks on hand | | | .. | | | .. | | | 2,137 13 4 | | |
| Dunedin Depot Property Account— | | | | | | | | | | | |
| Cost at 31st March, 1920 .. | | | .. | | | 385 18 4 | | | | | |
| Less sales .. | | | .. | | | 341 10 0 | | | | | |
| Depreciation .. | | | .. | | | 44 8 4 | | | | | |
| | | | | | | 44 8 4 | | | | | |
| Sundry debtors | | | .. | | | .. | | | 29,269 17 4 | | |
| Suspense Account .. | | | .. | | | .. | | | 23 11 2 | | |
| Investment Account | | | .. | | | .. | | | 30,000 0 0 | | |
| Cash in hand and in Public Account on 31st March, 1921 | | | .. | | | .. | | | 18,292 16 4 | | |
| | | | | | | | | | £327,253 6 8 | | |

State Coal-mines Office, Wellington, 24th June, 1921.

Louis H. EILERS, F.R.A., N.Z., Accountant.

Examined and found correct.—ROBERT J. COLLINS, Controller and Auditor-General.

NOTE.—Stocks Suspense Account created at request of Audit Department to comply with Treasury Regulation 135.

G. JAS. ANDERSON,
Minister of Mines.

Statement of Point Elizabeth (Liverpool) Colliery Profit and Loss Account for the Year ended 31st March, 1921.

| Dr. | £ | s. | d. | Cr. | £ | s. | d. |
|---|----------|----|----|-----------------------------|----------|----|----|
| To Management and office salaries .. | 4,530 | 11 | 3 | By Gross profits at mine .. | 128,379 | 18 | 7 |
| Interest and exchange .. | 6,489 | 12 | 6 | Rents .. | 521 | 1 | 8 |
| Travelling-expenses .. | 331 | 4 | 8 | | | | |
| Printing and stationery .. | 114 | 16 | 6 | | | | |
| Repairs and maintenance .. | 2,029 | 9 | 9 | | | | |
| Telegrams and postages .. | 151 | 14 | 0 | | | | |
| Railway haulage .. | 22,116 | 13 | 5 | | | | |
| Insurances .. | 691 | 16 | 3 | | | | |
| Compensation for accidents and fund .. | 1,376 | 0 | 4 | | | | |
| Cargo adjustments .. | 51 | 15 | 3 | | | | |
| General expenses .. | 712 | 13 | 7 | | | | |
| Marine freights .. | 61,447 | 17 | 0 | | | | |
| Terminal charges .. | 2,546 | 13 | 3 | | | | |
| Audit fees .. | 42 | 0 | 0 | | | | |
| Bad debts .. | 79 | 18 | 3 | | | | |
| Depreciation : Mine, buildings, plant, and machinery .. | 14,984 | 14 | 11 | | | | |
| Balance : Net profit .. | 117,697 | 10 | 11 | | | | |
| | 11,203 | 9 | 4 | | | | |
| | £128,901 | 0 | 3 | | | | |
| | | | | | £128,901 | 0 | 3 |

2—C. 2A.

Wellington Depot Trading Account for the Year ended 31st March 1921.

| Dr. | £ | s. | d. | Cr. | £ | s. | d. |
|--|--------|----|----|-------------------------------------|---------|----|----|
| To Stocks on hand at 31st March, 1920 .. | 66,897 | 9 | 9 | By Sales of coal .. | 80,938 | 6 | 2 |
| Purchases of coal .. | 3,036 | 7 | 5 | Sales of firewood, coke, &c. .. | 4,592 | 8 | 8 |
| Purchases of firewood, coke, &c. .. | 1,393 | 6 | 1 | Sundries .. | 43 | 16 | 6 |
| Cartage to depot .. | 867 | 17 | 1 | | | | |
| Wharfage .. | | | | Stocks on hand at 31st March, 1921— | | | |
| Balance : Gross profit .. | | | | Coal .. | 524 | 4 | 4 |
| | | | | Firewood, &c. .. | 507 | 0 | 0 |
| | | | | Stores, &c. .. | 479 | 6 | 5 |
| | | | | | | | |
| | | | | | 85,574 | 11 | 4 |
| | | | | | | | |
| | | | | | 1,510 | 10 | 9 |
| | | | | | £87,085 | 2 | 1 |

TABLE SHOWING THE POSITION OF THE STATE COAL-MINES ACCOUNT FROM INCEPTION TO
31ST MARCH, 1921.

| Name of Works. | Total Capital Expenditure. | Total Amount of Depreciation written off. | Assets : Net Capital as per Balance-sheet, 1921. | Net Profits. | Net Losses. | Liabilities as per Balance-sheet, 1921. |
|---|----------------------------------|---|---|--------------|--------------|--|
| | £ s. d. | £ s. d. | £ s. d. | £ s. d. | £ s. d. | £ s. d. |
| Point Elizabeth Colliery .. | 98,210 9 0 | | | | | |
| Less loss by fire and sales | 2,291 6 11 | | | | | |
| | 95,919 2 1 | 95,919 2 1 | .. | 135,057 5 3 | .. | .. |
| Point Elizabeth (Liverpool) Colliery | 215,034 15 3 | 79,872 1 4 | 135,162 13 11 | 18,036 4 10 | .. | .. |
| Seddonville Colliery .. | 38,187 6 8 | | | | | |
| Less sales .. | 548 17 0 | | | | | |
| | 37,638 9 8 | 37,638 9 8 | .. | .. | 38,447 11 1 | .. |
| Briquette-works property.. | 16,135 2 6 | | | | | |
| Less sales of plant .. | 2,066 5 0 | | | | | |
| | 14,068 17 6 | 14,068 17 6 | .. | .. | 22,660 18 10 | .. |
| Charming Creek prospecting | 5,956 18 6 | 5,956 18 6 | .. | .. | 5,954 11 8 | .. |
| James Colliery, Eight-mile | 20,443 17 0 | .. | 20,443 17 0 | .. | .. | .. |
| MacDonald Colliery, Waiko- kawai | 62,505 19 11 | .. | 62,505 19 11 | .. | .. | .. |
| Wellington Depot property | 6,247 10 10 | | | | | |
| Less sales .. | 106 5 6 | | | | | |
| | 6,141 5 4 | 3,747 4 9 | 2,394 0 7 | .. | 13,192 7 3 | .. |
| Christchurch Depot property | 8,156 15 2 | | | | | |
| Less loss on horses .. | 105 0 0 | | | | | |
| | 8,051 15 2 | 4,805 0 5 | 3,246 14 9 | 2,217 12 1 | .. | .. |
| Wanganui Depot property | 2,983 12 6 | | | | | |
| Less loss on horses .. | 85 0 0 | | | | | |
| | 2,898 12 6 | 1,508 17 0 | 1,389 15 6 | .. | 1,846 5 2 | .. |
| Dunedin Depot property .. | 2,023 3 7 | | | | | |
| Less sale of plant .. | 641 10 0 | | | | | |
| | 1,381 13 7 | 1,381 13 7 | .. | .. | 4,247 14 11 | .. |
| Hulks property .. | 4,033 15 5 | | | | | |
| Less sales .. | 1,948 17 0 | | | | | |
| | 2,084 18 5 | 2,084 18 5 | .. | 1,786 12 11 | .. | .. |
| Office furniture .. | 189 13 9 | | | | | |
| Less sales .. | 17 5 0 | | | | | |
| | 172 8 9 | 172 8 9 | .. | .. | 172 8 9 | .. |
| Grand total .. | 480,109 0 1 | | | | | |
| Less losses and sales .. | 7,810 6 5 | | | | | |
| | 472,298 13 8 | 247,155 12 0 | 225,143 1 8 | | .. | .. |
| Investment Account .. | .. | .. | .. | 1,495 2 7 | .. | .. |
| Discounts .. | .. | .. | .. | 13 2 9 | .. | .. |
| Cash lost (highway robbery) | .. | .. | .. | .. | 89 0 1 | .. |
| Totals, profits and losses .. | .. | .. | .. | 158,606 0 5 | 86,610 17 9 | .. |
| Balance, profits over losses | .. | .. | .. | .. | 71,995 2 8 | .. |
| Stocks on hand .. | .. | .. | 24,524 0 2 | .. | .. | .. |
| Investment Account .. | .. | .. | 30,000 0 0 | .. | .. | .. |
| Deposit Account .. | .. | .. | .. | .. | .. | 10 0 0 |
| Suspense Account .. | .. | .. | 23 11 2 | .. | .. | .. |
| Sundry debtors .. | .. | .. | 29,269 17 4 | .. | .. | .. |
| Cash on hand .. | .. | .. | 18,292 16 4 | .. | .. | .. |
| Debentures and Loan Ac- count | .. | .. | .. | .. | .. | 227,601 0 7 |
| Sundry creditors .. | .. | .. | .. | .. | .. | 22,286 3 10 |
| Accrued interest .. | .. | .. | .. | .. | .. | 4,550 19 7 |
| Sinking Fund Account .. | .. | .. | .. | .. | .. | 20,028 0 0 |
| Depreciation Fund Account | .. | .. | .. | .. | .. | 5,884 11 2 |
| Bad-debts reserve .. | .. | .. | .. | .. | .. | 500 0 0 |
| General Profit and Loss Ac- count | .. | .. | .. | .. | .. | 45,582 11 6 |
| Stocks Suspense Account .. | .. | .. | .. | .. | .. | 810 0 0 |
| | | | 327,253 6 8 | 158,606 0 5 | 158,606 0 5 | 327,253 6 8 |

LOUIS H. EILERS, F.R.A., N.Z.,
Accountant.

Approximate Cost of Paper.—Preparation, not given; printing (575 copies, including plans), £30 10s.

By Authority : MARCUS F. MARKS, Government Printer, Wellington.—1921.

Price 1s.]