

ball, which appeared to be going through. Dr Brown (4) was bowled by D. McBeath with a break-back from middle and leg to off, the straight bat covering only the legward pins. Driscoll opened with a sweet 4 to leg, staying in until he had made 11, when H. McBeath swerved him to leg and got his middle stump with a ball that Driscoll thought was off the wicket. A new man, Abercrombie, showed good strokes, but ran up to the other batsman's end and found his wickets down when he broke the silly pair. Gleeson came in and after two deliveries played with great confidence for 22 not out, selecting his shots with judgment and scoring good boundaries on the leg side. He did not seem to relish H. McBeath's fast ones on his pads, but practice will improve that. With 5 wickets down for 39—no extras—an appeal for falling light was allowed by the umpires and the match goes on to next Wednesday with Wyndham in a winning position. D. McBeath two for 17 and H. McBeath two for 32 bowled unchanged. Bogue letting nothing past him. Of the 10 wickets taken in Wyndham's innings Doig got 5 for 67, Tapley 3 for 22, and John Gilbertson 2 for 40. The I.C.C. bowlers were not in luck's way, as they frequently beat bat and wickets, and several—indeed many—catches were refused by tired or hindered fieldsmen.

UNION (71) v. APPLEBY (170).

Ferguson (11) and McKenzie opened for Union and got at the bowling straight away, but an l.b.w. decision against the former from Battersby's bowling rattled the team. A. Hamilton (9) seemed to be going, and Fogo slashed 18, but extras 9 was the next "man" in total, four ducks rounding off the total column. Poole and Battersby got 5 wickets each for 19 and 24 runs respectively. The Appleby fielding was brisk.

Petrie (14) and Battersby (11) did the introduction well for Appleby, but to Poole's brilliant 55, bowled Dixon, the side owes its win. The veteran was in generous vein and treated all the bowling alike, in one over getting 4 consecutive fours. Young Dale hit a rustic 40, and the bat must have suffered from the muscle behind the cane. H. Irwin made a graceful 11, but was unable to produce a second wind to stay in. Extras were 14. Nine bowlers were tried by Union, and only one of them didn't get a wicket. Union began a second innings, and drew stumps at 6.30 prompt, with no wickets down for 29—a good opening. With practice before next Wednesday, it should have a fair chance as Poole is the only "big" bat in the Appleby team when Groves has not his eye in.

THE HONOURED DEAD.

NATIONAL WAR MEMORIAL.

The selection of the site for the National War Memorial is awaiting the presence in Wellington of a full Cabinet. As soon as Ministers can be got together the matter will be considered. It is probable that the decision will be made quickly. When the site is chosen it will yet be some time before the work can be put in hand. Designs will require to be obtained. It is practically certain that they will be invited both outside and within New Zealand.

Referring to soldiers' graves, the Hon. G. J. Anderson, Minister of Internal Affairs, after inspecting the graves at Featherston, says that the Government will keep in order the graves of all those who died during the camps or in hospital from war effects up to twelve months after the termination of the war. After Wellington attention would be paid to Auckland, and subsequently to cemeteries where soldiers' graves are in smaller numbers.

Great value in Ladies' Ready-to-Wear Garments. Big reductions in all departments at our Great Marking Down Sale. See these exceptional values in our Ladies' Showroom, upstairs. Costumes in serge, tweed, and gaberdine, Sale price 79/6, 89/6, 105/6, 115/6 to 147/6. Covert and tweed coats. Sale price 59/6, 85/6, 95/6 to 159/6. Rain Coats, Sale price 32/6 to 147/6. A special bargain line in Rain Coats to clear at 69/6. Big clearance in Millinery Semi-trims. Leghorns and ready-to-wears to clear, all at 19/6. Special bargain table of ready-to-wears. Sale price 1/11, 2/11, 4/11 to 12/6. Splendid value in Summer Dresses. See Bargain display, all 19/6. Camisoles in smart styles, all one price 4/6. Chemises, vests all one price, to clear 3/6. Aprons and overalls 3/6 to 9/6. Blouses in voile and crepe, Sale price 11/6. All goods (except Millinery) exchanged during Sale. Alterations free of charge, at H. and J. Smith, Progressive Drapers, Tay street, Invercargill and Main Street, Gore.

WAIRIO RACES.

WEDNESDAY, JANUARY 19.

—First Race, 1 p.m.—

SPECIAL Train leaves Invercargill at 10.35 a.m.

W. A. SAUNDERS, Sec.

SOUTHLAND SOLDIERS' CLUB.

APPLICATIONS for the position of STEWARD of the Soldiers' Club, will be accepted by the Secretary up till 5 p.m. on Saturday, January 15th, 1921. Schedule of duties, etc. can be obtained on application.

L. S. GRAHAM, Secretary.

RACING NOTES.

TAPANUI RACING CLUB.

The following handicaps have been declared for the Tapanui Racing Club's annual meeting on Wednesday, January 26, 1921:—

Trial Stakes (six furlongs)—Janus 9.1, Rockhampton 9.1, Flag Lieutenant 9.1, Brilliant Hope 9.0, Samum 9.0, Herbert 9.0, Soldier Boy 9.0, Shawnee 8.12, Lady Winston 8.12, (Pallas—Kea) 8.12, Moeraka 8.12, Lady Beatrice 8.12, Miss Morn 8.12, Markilla 8.3.

President's Handicap (6 furlongs)—Mettle Drift 9.0, Red Pal 9.0, Sunlit 8.10, Ruena 8.9, Lady Links 8.8, Moneymusk 8.8, Lady Knight 8.5, Osterman 8.2, Pallah 8.2.

Welter Hack Handicap (six furlongs)—Mettle Drift 9.0, Red Pal 9.0, Sunlit 8.10, Ruena 8.9, Lady Links 8.8, Mirza 8.6, Lady Knight 8.5, Hard Cash 8.4, Lady Winston 8.3, Osterman 8.2, Pallah 8.2, Centimetre.

Tapanui Hack Handicap (1½ miles)—Mandrake 9.3, Mettle Drift 8.6, Mirza 8.1, Kokowai 7.13, Red Tape 7.8, Breton 7.5, Destined 7.3, Centimetre 7.3, Samum 7.3, Flag Lieutenant 7.3, Pallah 7.3, Soldier Boy 7.3.

Flying Hack Handicap (five furlongs)—Red Pal 9.0, Sunlit 8.10, Ruena 8.9, Moneymusk 8.8, Lady Links 8.8, Lady Knight 8.5, Hard Cash 8.4, Miss Morn 8.2, Samum 8.2, Pallah 8.2, Moeraka 8.2, Rockhampton 8.2, Markilla 8.2, Osterman 8.2.

Stewards' Hack Handicap (seven furlongs)—Kokowai 9.0, Flag Lieutenant 8.8, Brilliant Hope 8.7, Lady Beatrice 8.7, Samum 8.7, Pallah 8.7, (Pallas—Kea) 8.7, Centimetre 8.7, Soldier Boy.

Mandrake and Red Pal are not eligible. Tapanui Trot Handicap (1½ miles)—Greenstripe 120yds bhd, Until 12, First Chime 108, Laura Child 95, Dark Rosine 72, Straychild 72, Cuiraesur 72, Kapuka Lass 60, Somnus 36, Quick Match 36, Dolly Dragoon, Little Rain, Don Dallace, Ivy Bells, Fashion Plate, Kelvin Wilkes, Pets Alone, Abec, Ardussa, Tommy Direct, Brooklyn Chimes, Honest Ned limit.

Domination Trot (1½ miles)—Greenstripe 120yds bhd, Moonglow 120, First Chime 108, Laura Child 95, Cuiraesur 72, Dark Rosine 72, Stray Child 72, Quick Match 36, Somnus 36, Kelvin Wilkes, Fashion Plate, Ivy Bells, Don Wallace, Pets Alone, Little Rain, Dolly Dragoon, Abec, Ardussa, Tommy Direct, Tuxedo Lady, Chanter, Brooklyn Chimes, Honest Ned.

OTAUTAU RACING CLUB.

The following handicaps have been declared by Mr A. Jones for the annual meeting of the Otautau R.C. on Friday, January 21:—

Crown Stakes (six furlongs)—Glentruin 9.0, Flag Lieutenant 8.12, Samum, Killory, Destined, Alaska, Linton, Glenhupai, Lady Winston, Canbow, Bonnie Queen, July Spark, Moeraka, Rockhampton, Navy Cut, Sabor, Red Eagle, Soldier Boy, Soldier's Pride and Boniform—Grasshopper 8.10, Markilla, Moulin Rouge, Lady Joan and Lady Blissful 8.9.

Bayswater Trot (one mile and a half)—Siea, Strathlora, Sunridge, Polyanthus, Ringway, Moor Chimes, Aloxit, John Wilkes, Thornage, Fashion Plate, Fenchild, Harold Yet and Lady Prince limit, Greenhorn 12yds bhd, Quick Match 24, Kentucky Wood 60, McGrath 60, Rothbell 72, Tahiti 95, Lady Marvin 120, General Joffre 120, Matin Chimes 168, Papeete 180.

Otautau Cup (one mile and a quarter)—Mazama 10.12, Rorke's Drift 9.0, Linden 8.1, Jock 7.12, Miss Muriel 7.12, Mandrake 7.8, Awahou 7.7, Hineamarua 7.7, Glenshine 7.7, Marching Order 7.3, Mettle Drift 7.0, Red Admiral 7.0, Kokowai 7.0, Botanist 7.0.

Ringway Hack Handicap (seven furlongs)—Mandrake 9.3, Frenchman 8.10, Sartolite 8.10, Marching Order 8.10, Mettle Drift 8.9, Wild Night 8.7, Sunlit 8.0, Lady Links 7.12, Flag Lieutenant 7.9, Bright Spot 7.8, Red Eagle 7.7, Linton, Samum 7.7, Pallah 7.7, Sabor 7.7.

Otautau Steeplechase (about two and a half miles)—Silverspire 11.13, Palladio 11.6, Dunmure 11.3, Wicklow 10.2, Staff Officer 9.12, Achilles 9.12, St. Cletus 9.11, Gleniela 9.11, Miss Trixie 9.9, Moonglow 9.8, Silver Patch 9.7, Cazna 9.7.

Strathmore Hack Handicap (six furlongs)—Mandrake 9.3, Frenchman 8.10, Sartolite 8.10, Mettle Drift 8.9, Wild Night 8.7, Sunlit 8.0, Lady Links 7.12, Bothnia 7.12, Glentruin 7.9, Bright Spot 7.8, Samum 7.7, Killory 7.7, Destined 7.7, Alaska 7.7, Glenhupai 7.7, Lady Winston 7.7, Bonnie Queen 7.7, Pallah 7.7, Soldier's Pride 7.7, Soldier Boy 7.7, Osterman 7.7.

Flying Handicap (six furlongs)—Buller 9.0, Redshire 8.10, Miss Muriel 8.4, Borodino 8.0, Orderdown 8.0, Mandrake 7.12, Glensponse 7.7, Bothnia 7.7, Botanist 7.7.

Waikouro Welter Handicap (one mile)—Linden 9.0, Miss Muriel 8.12, Borodino 8.12, Mandrake 8.7, Awahou 8.5, Hineamarua 8.5, Glenshine 8.5, Marching Order 8.0, Sartolite 8.0, Kokowai 7.10, Red Admiral 7.10, Red Tape 7.8, Botanist 7.7.

EVERBODY'S FRUIT MART.

W. DRAKE, DEE STREET
(Near Club Hotel).

CHOICEST—

FRUIT AND

CONFECTIONERY

ALWAYS OBTAINABLE.

JAM SEASON.

ALL SIZES Jam Jars, Rubber Rings, Jam Pot Covers, Wood Spoons, Jam Pans, Scales, etc. You will find our prices right for all Jam requisites.

Also all sizes of

SCREW TOP PRESERVING JARS.

Write or telephone your order and we will deliver promptly.

NOBLE'S.

DEE STREET, INVERCARGILL.

WESNEY'S.

DEE STREET, INVERCARGILL.

1921

NEW ZEALAND DIARIES.
NEW ZEALAND DIARIES.

LETTS' DIARIES—All sizes, all prices.

POCKET DIARIES—A nice assortment. All sizes.

CALENDARS for 1921—1/-, 2/-, 3/- each.

TENNIS—

SLAZENGERS TENNIS BALLS—New season's stock.

AYRES' TENNIS BALLS—New season's stock.

TENNIS RACQUETS! TENNIS RACQUETS!

GROQUET—

CROQUET SETS, for 4 or 8 players, from 95/- to £7 7s per set.

WESNEY BROS.'

DEE STREET, INVERCARGILL.

CHAIRS! CHAIRS!

WE are at present carrying a good stock of Chairs of all kinds:—

Occ. Chairs, Morris Chairs, Divan Chairs, Tub Chairs, High Back Chairs and Kitchen Chairs

Covered in—

Moquette, Saddlebags, Tapestry and Shadow Tissue—of the best quality and moderately priced.

CALL AND INSPECT THESE AT

Geo. Moir & Son,

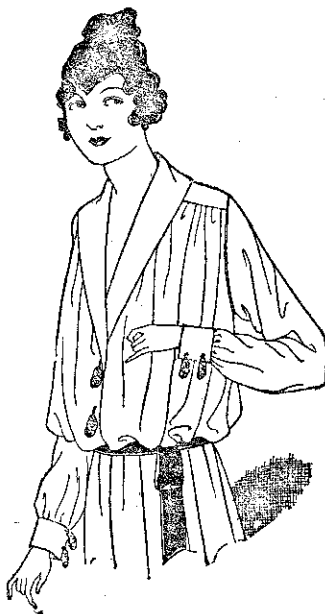
FURNITURE DEALERS AND MANUFACTURERS.

72 and 74 TAY STREET, Invercargill.
Phone 1176. Phone 1176.

Now we start another year, full of vigour and of cheer. Sustained by eating the delicious toffees, candies, and especially the sugar peanuts, and drinking the now famous soda fountain drinks at the Anglo-American Candy shop (Ayson's) 72 Dee street.

SPECIAL BLOUSE WEEK At "THE EXHIBITION"

THESE BLOUSES ARE OUR REGULAR HIGH CLASS GARMENTS AND MAY BE HAD IN VARIOUS STYLES, SIZES 13½ TO 15-INCH.



40 Only WHITE VOILE BLOUSES, with hemstitching finish. In two smart styles. Usually 10/6. This week 8/11 each.

30 Only WHITE MUSLIN BLOUSES with self stripe. For present wear, 10/6 for 8/11.

20 Only WHITE VOILE BLOUSES, with cord stripe. The latest; 11/6. This week 8/11.

60 Only ENGLISH CREPE BLOUSES; White ground with Coloured Stripe. Neat shirt style. Usually 13/6. This week 11/6.

36 Only PURE WHITE CREPE BLOUSES, in smart shirt style; good English Crepe. Usually 11/6. This week 9/6.

A SPECIAL LINE IN READY-TO-WEAR HATS—FOR THIS WEEK—8/11—

Thomson & Beattie, Ltd.

THE QUALITY HOUSE.

'Phone 13. P.O. Box 43. Tay Street, Invercargill.

The Eagle Hotel, Bluff.

(Opposite Railway Station.)

Proprietor: A. H. CUNNINGHAME.

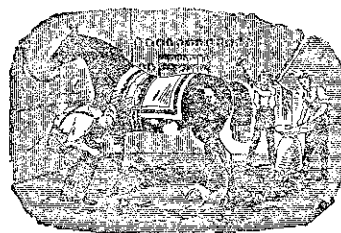
Late of Wanganui, and West Clive Hotel, Napier.

The Best Appointed House in Bluff for Tourists and Visitors.

Only high-class brands of Wines and Spirits, etc., in stock.

TARIFF MODERATE.

'Phone 10.



Stevenson Bros.

BLACKSMITHS, WHEELWRIGHT, AND GENERAL SMITHS.

WORKMANSHIP GUARANTEED.

EXECUTED BY EXPERIENCED WORKMEN.

ALL WOODWORK OF THOROUGHLY SEASONED TIMBER.

PHONE 447.

TAY STREET.

Xmas Presents AT LA MODE.

BLOUSES. Special Assortment of CREPE DE CHINE and GEORGETTE from 30s to 72s.

SCARVES in Maltese Lace and Silk from 14s to 42s.

HANDKERCHIEFS in Silk, Crepe, De Chine, Muslin, and Lines, from 9d to 3s 11d.

Special line of DOLLS, dressed in Crepe de Chine and Silk, from 15s to 30s.

DURING CHRISTMAS WE GIVE 1/- IN £1 FOR CASH

SPECIAL DISCOUNT FOR NURSES: 2/- IN THE £1 FOR CASH.

W. G. Baker,
DEE STREET.